

HATCH LOT RESERVE

Directions:

- Follow Route 82 south.
- Take a sharp left onto Hungerford Road.
- Take the next right onto Mill Road.
- Follow Mill Road for .8 miles.
- Look for a blue Hatch Lot sign on the left where the entrance to the parking area is located.

Interim Trail Distances

The Hatch Lot map displays interim trail distances in parentheses along the various sections of the trails.

Trail Facts:

BLUE TRAIL

- ◇ The blue trail is 2.03 miles long and includes moderate to steep slopes.
- ◇ This trail includes access to a spectacular vista where you can, on a clear day, view the Connecticut River and Long Island Sound.

RED TRAIL

- ◇ The 1.2 mile red trail is accessed from the south side of the parking lot or from the upper blue trail by crossing the small footbridge. It has some moderate to steep slopes.
- ◇ The trail can also be accessed from the lower blue trail near the large footbridge.

GREEN TRAIL

- ◇ The .3 mile green trail connects the white and blue trails.

EAST HADDAM TRAILS

HATCH LOT RESERVE

The Town of East Haddam, with Grant assistance from the State of Connecticut, purchased the 238-acre Hatch Lot in 2013. This protected open space is a mix of upland hardwood forest, exposed ledges, and mountain laurel groves. It also has wetlands, intermittent streams and vernal pools supporting a variety of woodland flora and fauna. A cleared section on the highest point of the property can have phenomenal views of the Connecticut River and Long Island Sound. Because of the varied topography and habitats, there is ample opportunity for observing interesting wildlife and plants, a huge variety of birds and some challenging hiking. This property joins a portion of the Dean property.

Permitted activities:

- ◆ Hiking
- ◆ Nature study
- ◆ Cross-country skiing
- ◆ Camping*
- ◆ Hunting*
- ◆ Horseback riding (see note)
- ◆ Mountain biking
- ◆ Snow shoeing
- ◆ Birding

Note: The bridges are not designed to support horses.

*by permit—see Land Use Office

Report any problems during your visit to the East Haddam Land Use Office.

860 873-5031

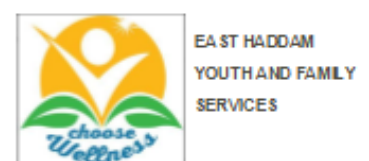
WHITE TRAIL

- ◇ The .84 white trail is accessed further down Mill Road from the parking lot heading towards Clark Hill Road.
- ◇ The trail ends on the Dean Easement where you can then pick up the Dean's Orange trail.
(see Note below)

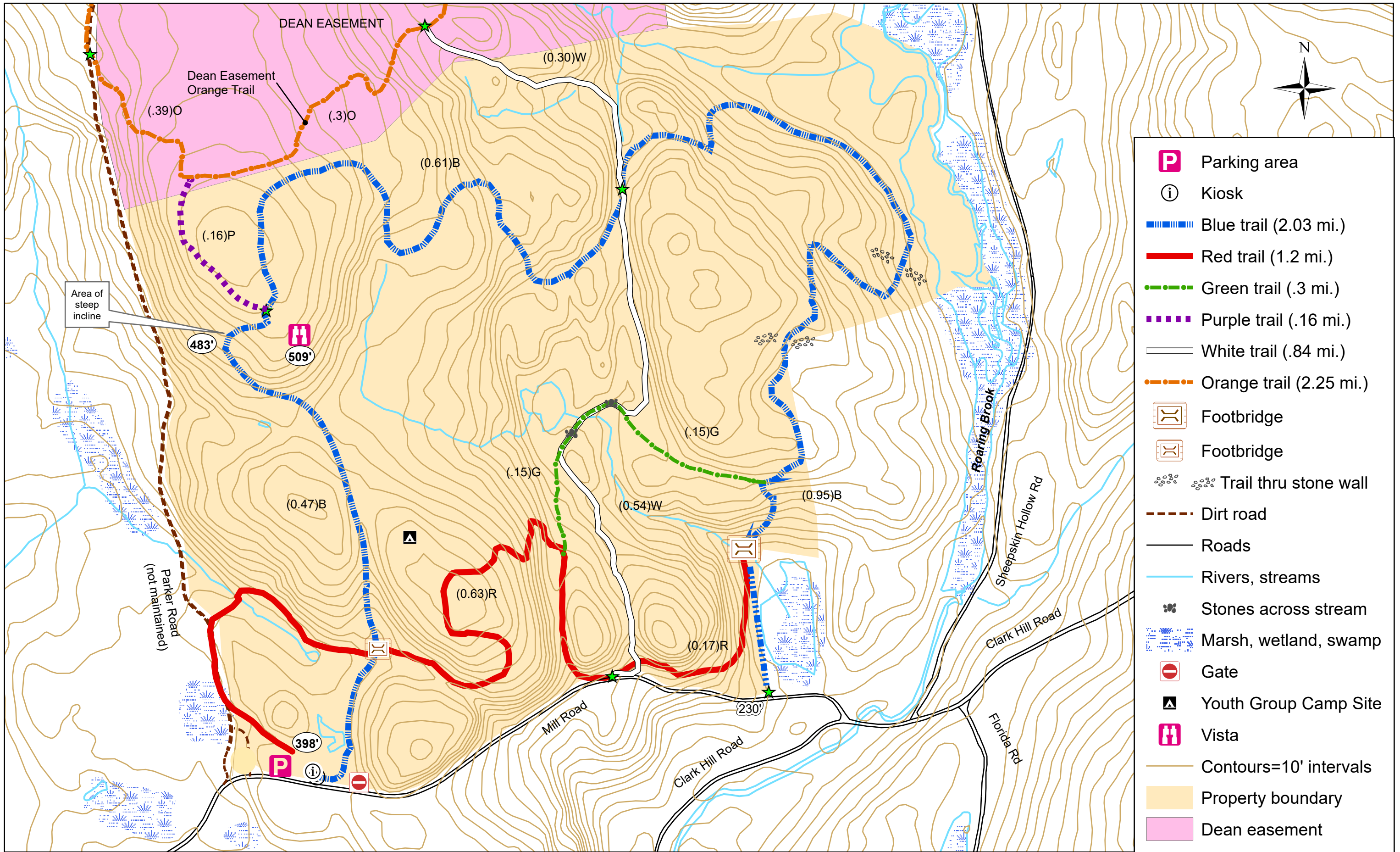
PURPLE TRAIL

- ◇ The .32 mile purple trail is accessed near the vista on the blue trail.
- ◇ This trail ends on the Dean easement where you can then pick up the Dean's orange trail.
(see Note below)

NOTE: The Hatch Lot Purple and White trails end on the adjacent Dean Easement property. They are connected by the Dean Orange trail. The Dean Orange trail is only partially reflected on the Hatch Lot map. For the complete Orange trail, see the Dean Easement brochure and map.



HATCH LOT RESERVE



For general reference only

Managed by EAST HADDAM CONSERVATION COMMISSION

0 250 500 Feet

- Parking area
- Kiosk
- Blue trail (2.03 mi.)
- Red trail (1.2 mi.)
- Green trail (.3 mi.)
- Purple trail (.16 mi.)
- White trail (.84 mi.)
- Orange trail (2.25 mi.)
- Footbridge
- Footbridge
- Trail thru stone wall
- Dirt road
- Roads
- Rivers, streams
- Stones across stream
- Marsh, wetland, swamp
- Gate
- Youth Group Camp Site
- Vista
- Contours=10' intervals
- Property boundary
- Dean easement